

SPECIAL SENSES VIDEO RECORDING LINKS AND TERMINOLOGY LIST

Dr. Lisa Brinn

Video Recording Links for Lecture

- [Module 13 MLO1 Video Sensory Information](#)
- [Module 13 MLO2 Video General Senses](#)
- [Module 13 MLO3 Video Smell and Taste](#)
- [Module 13 MLO4 Video Hearing and Equilibrium](#)
- [Module 13 MLO5 Video Eye Structures](#)

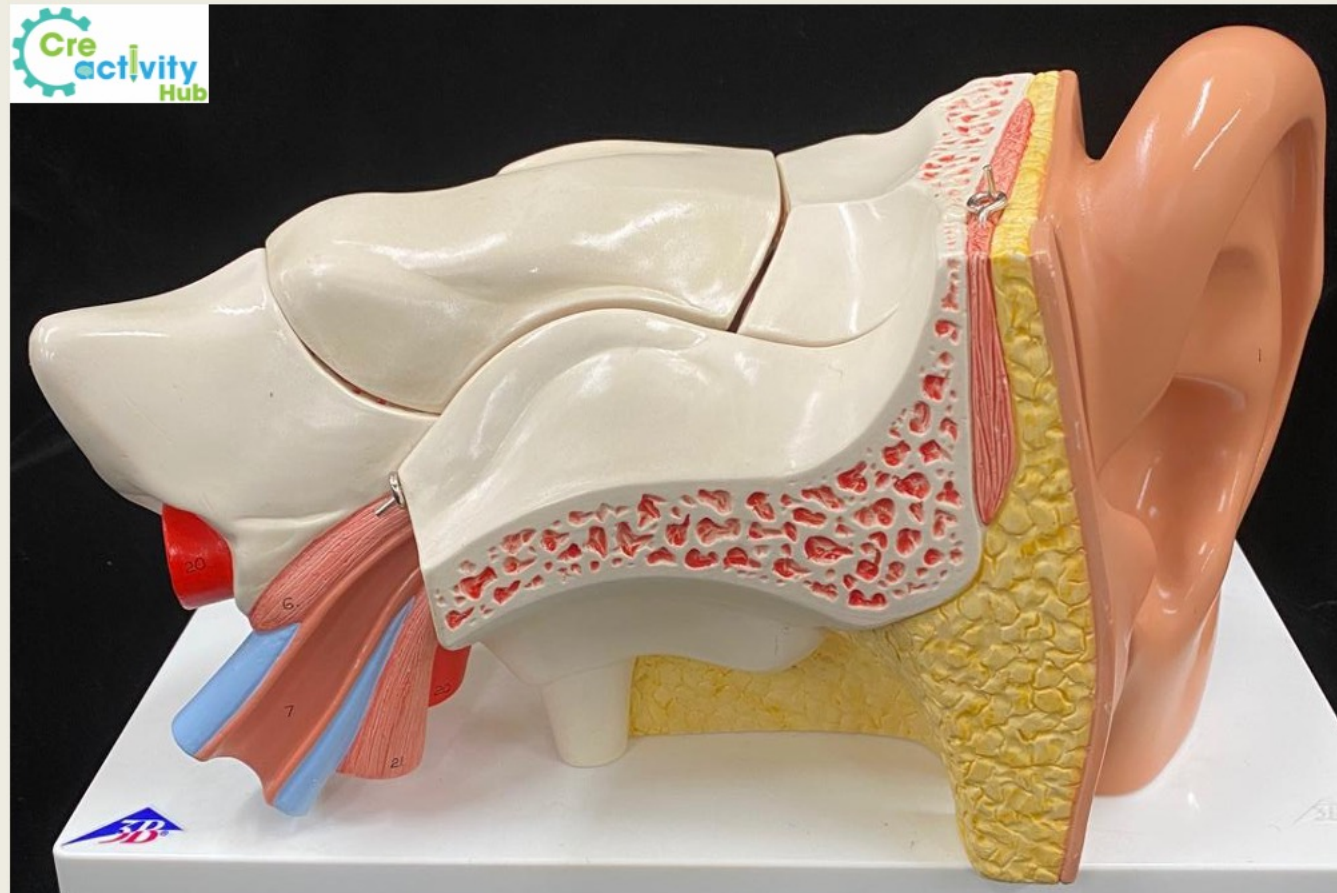
Video Recording Links for Lab

- [Module 13 - Video Ear Module](#)
- [Module 13 - Video Eye Structures](#)

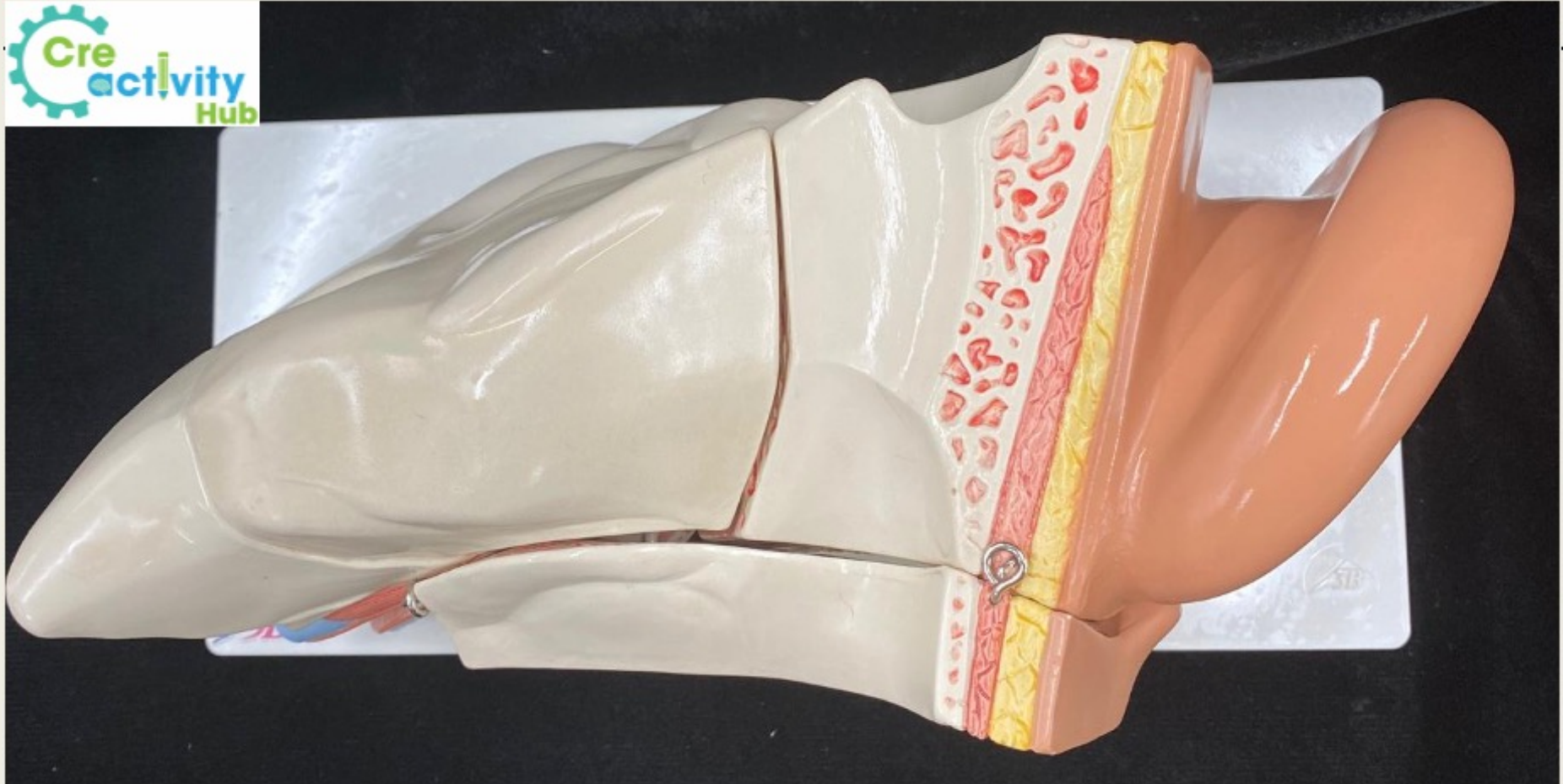
Ear Model

<p>external ear</p> <ul style="list-style-type: none">• auricle• external auditory canal• tympanic membrane <p>middle ear</p> <ul style="list-style-type: none">• malleus• incus• stapes <p>internal ear</p> <ul style="list-style-type: none">• cochlea• oval window• round window	<p>auditory tube</p> <p>vestibule</p> <p>semicircular canals</p> <ul style="list-style-type: none">• anterior• lateral• posterior <p>vestibulocochlear nerve</p>
---	--

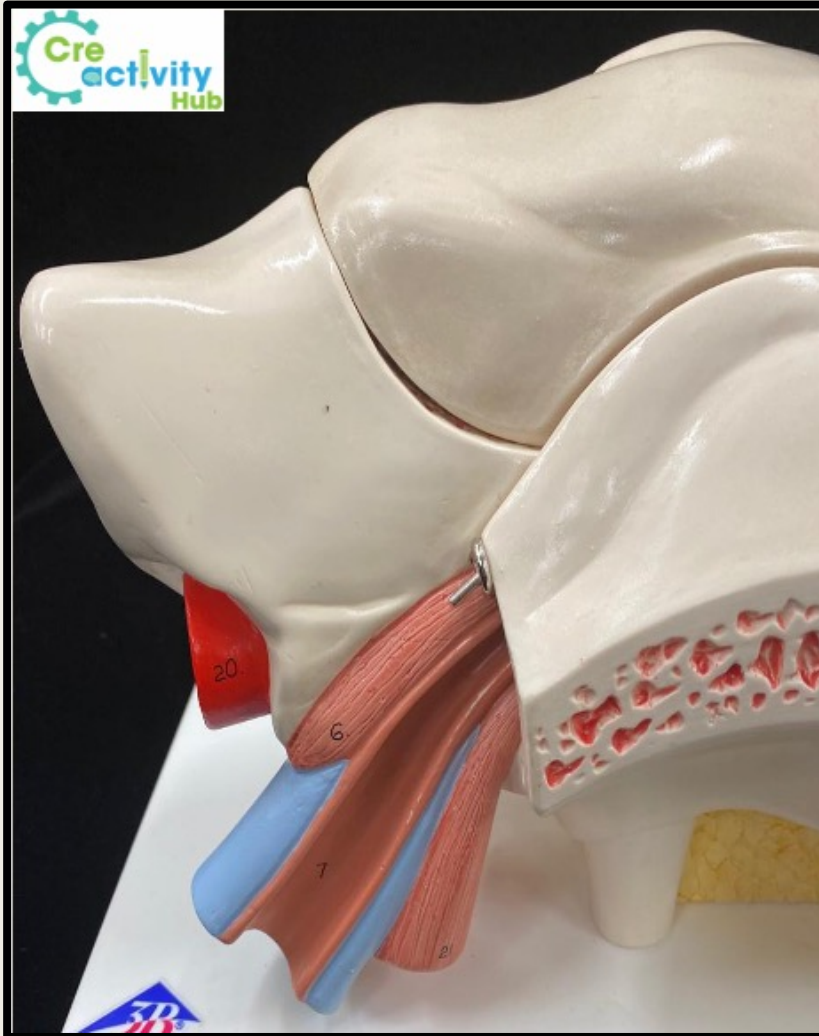
Ear - Anterior View



Ear - Superior View



Ear – Anterior-Medial and Anterior-Lateral Views



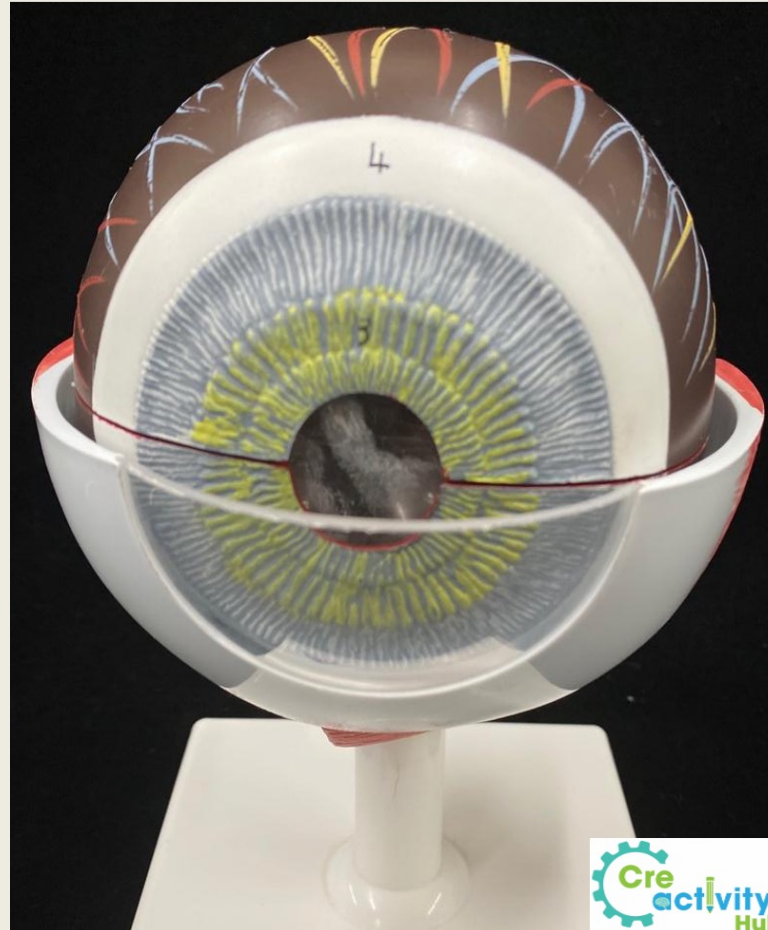
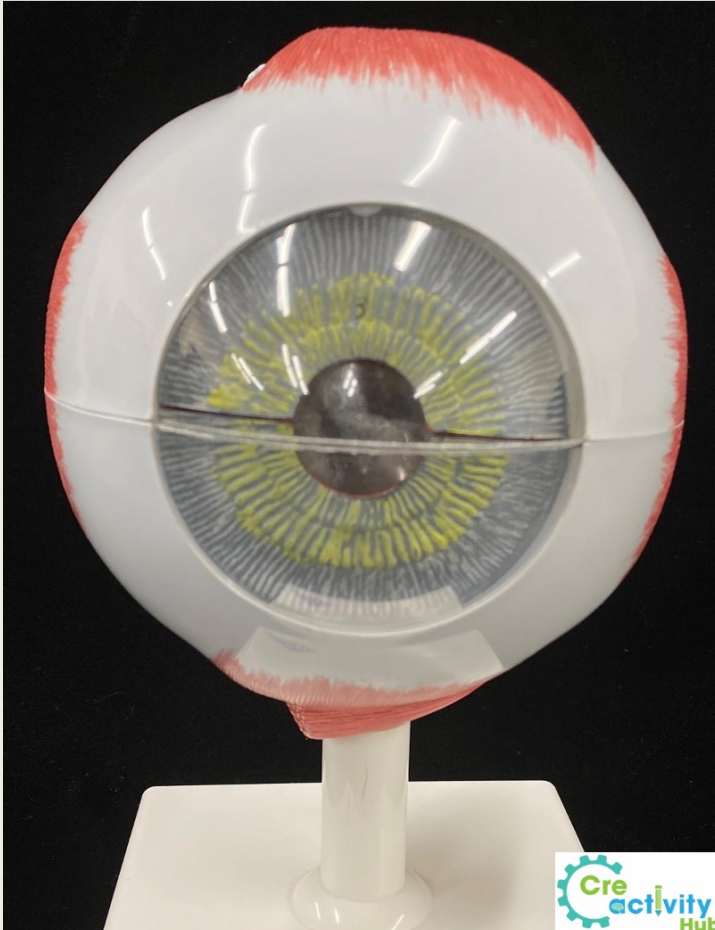
Ear - Posterior View



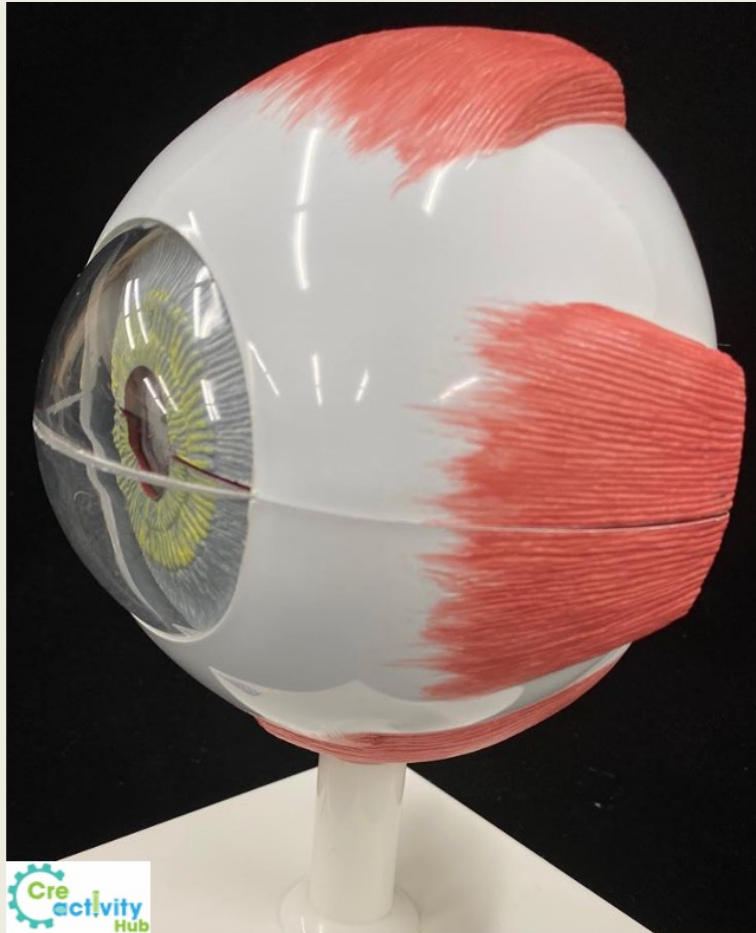
Eye Models

- cornea
- sclera
- iris
- pupil
- choroid
- retina
- lens
- optic nerve
- fovea
- ciliary muscle

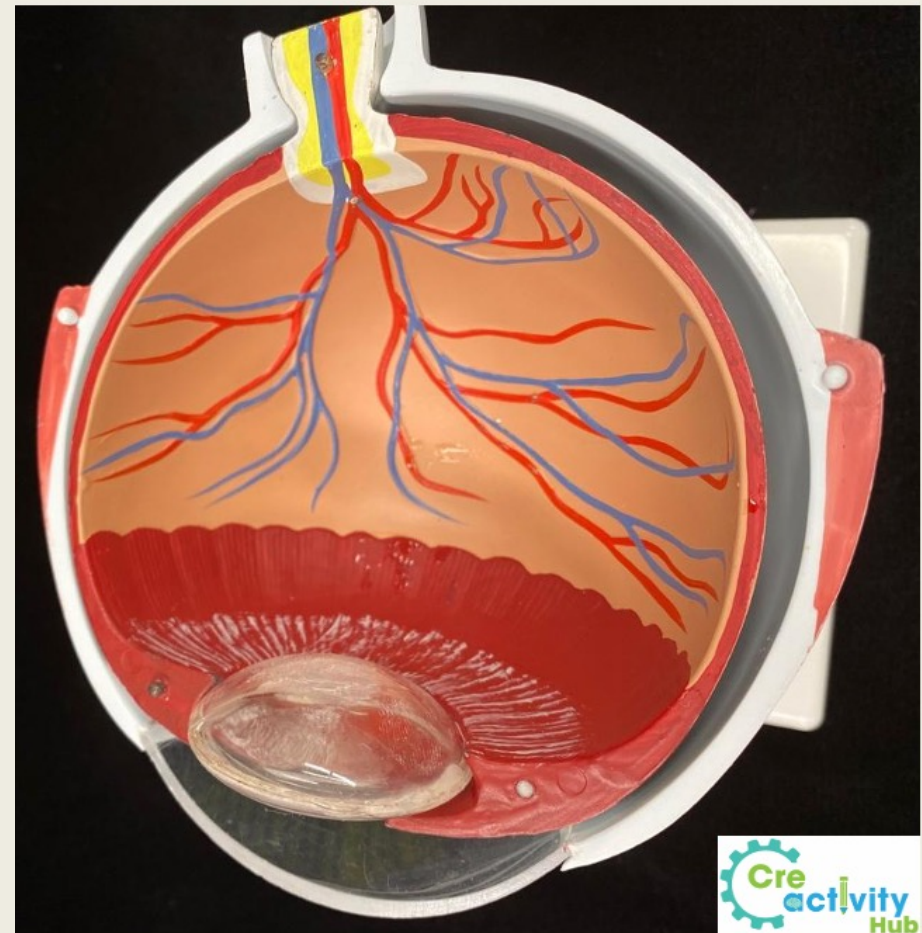
Anterior View



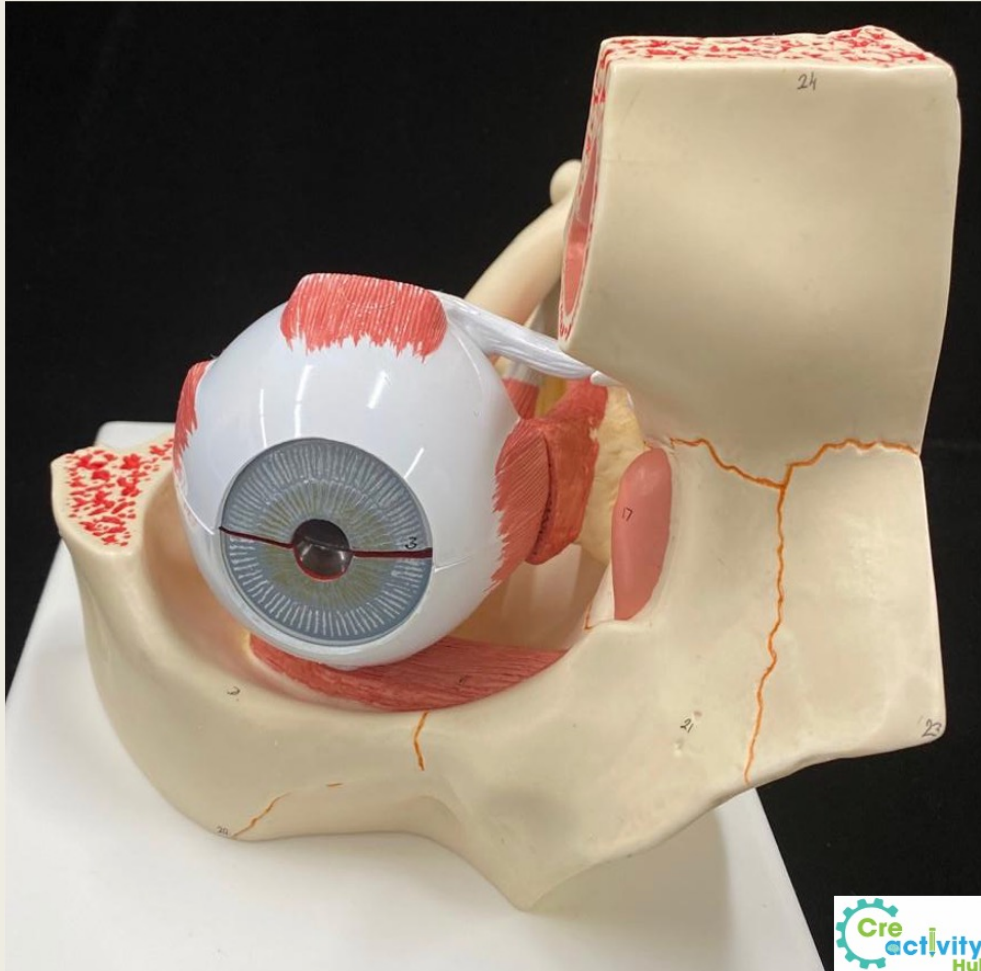
Lateral View



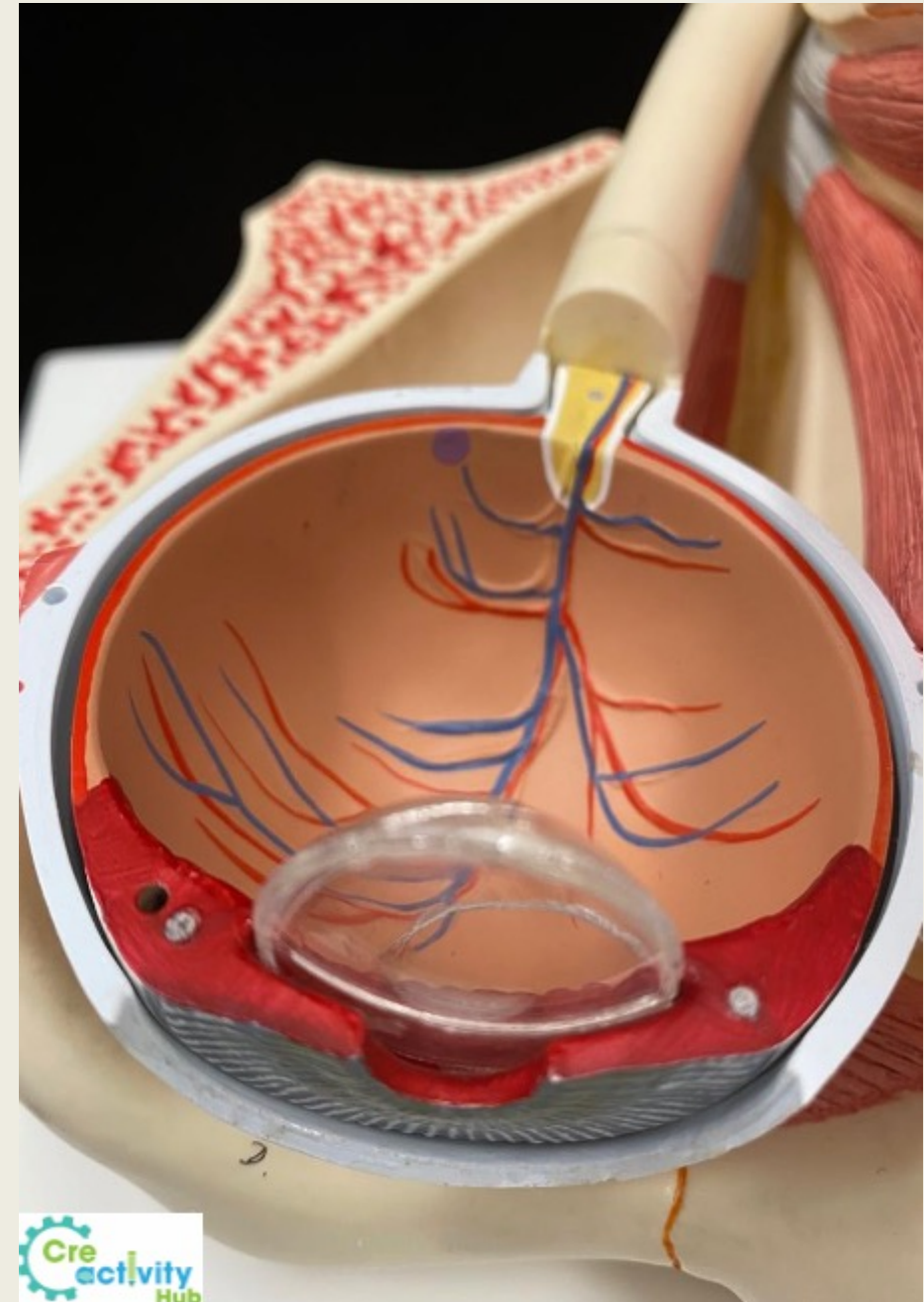
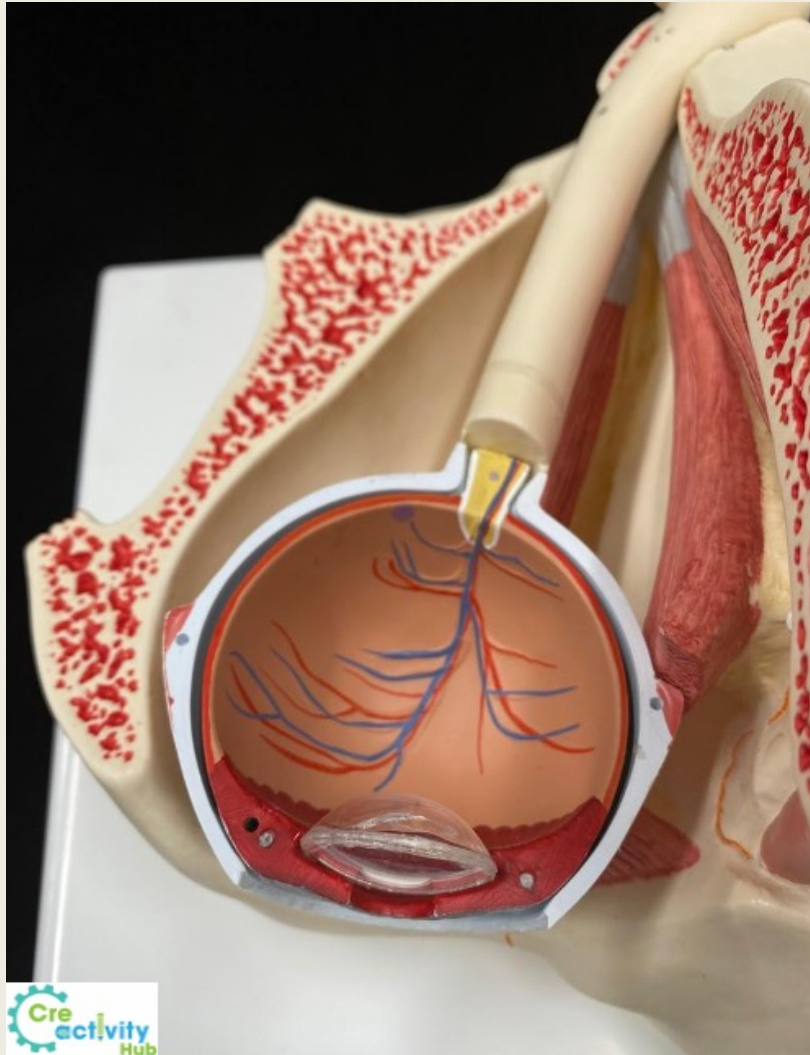
Superior View



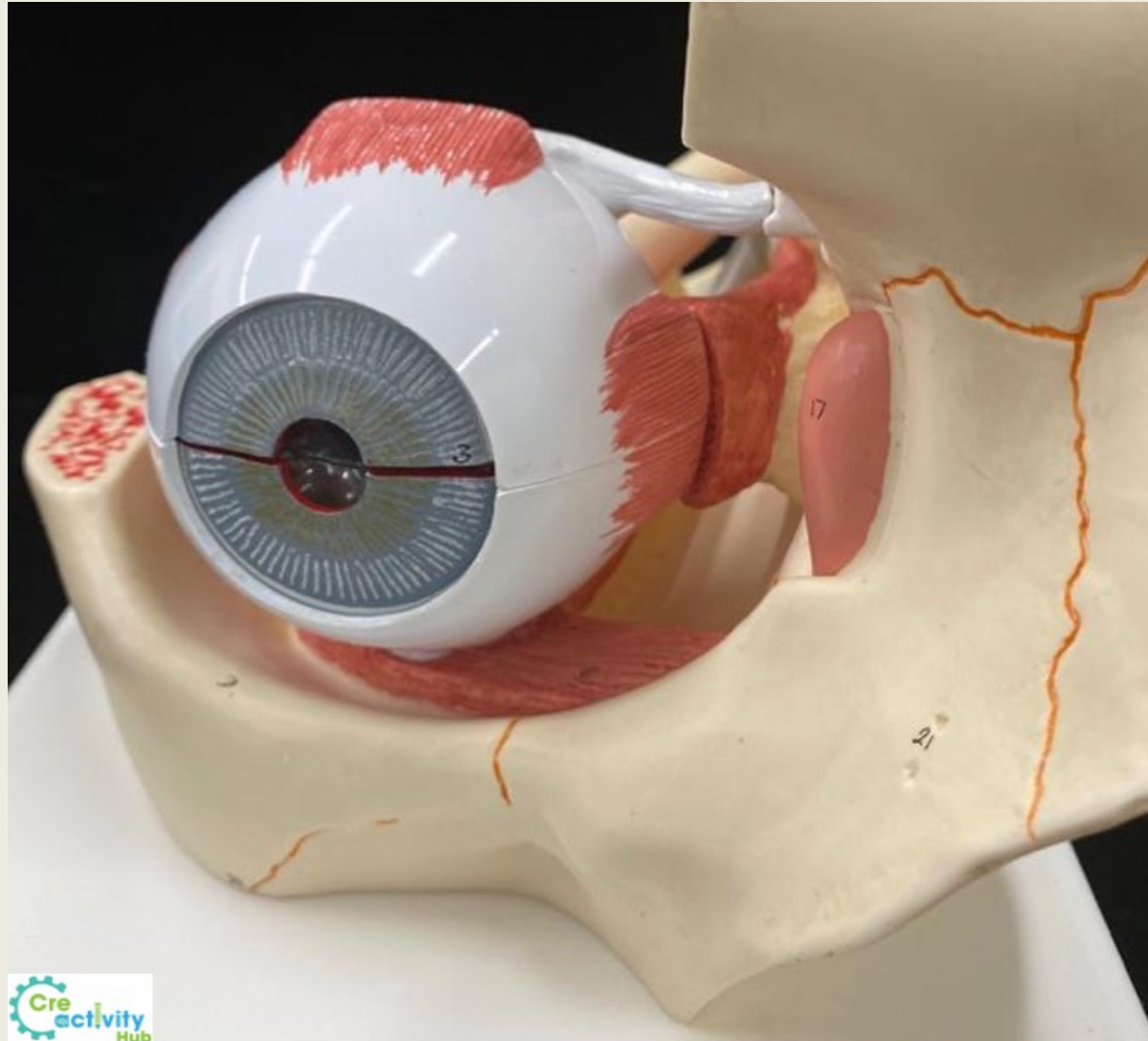
Anterior View



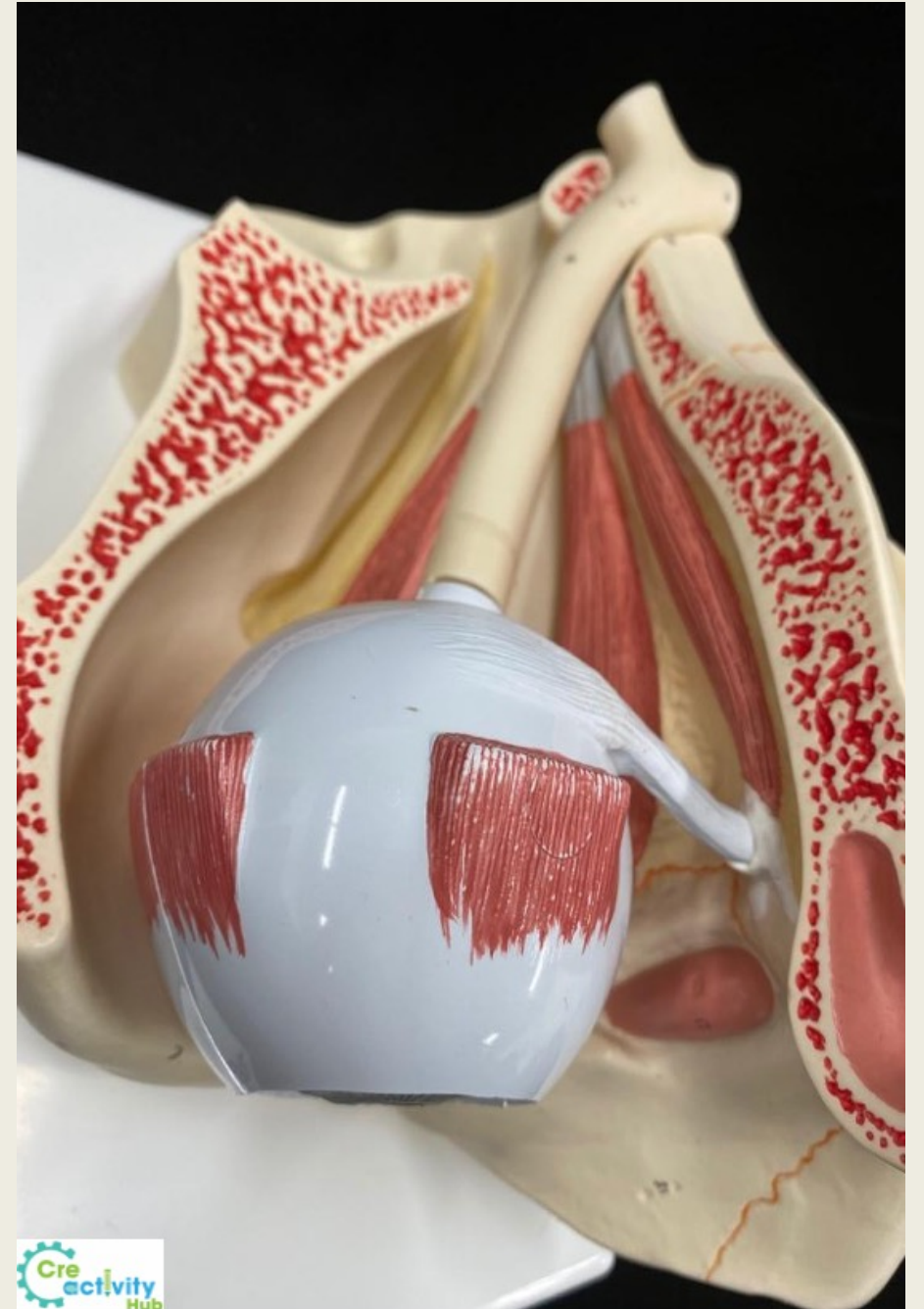
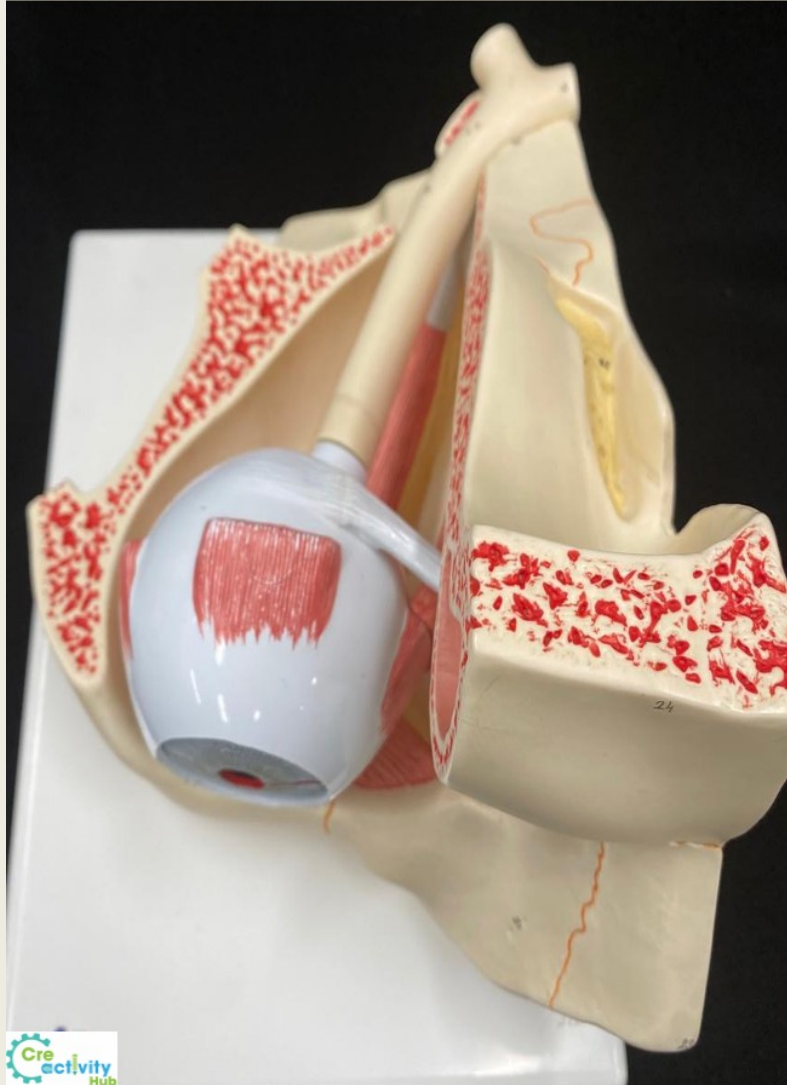
Antero-superior View



Antero-medial View



Superior View



Postero-superior View

